

GE Healthcare

You and *i*

LOGIQ *i* compact ultrasound



Portability with power. LOGIQ *i* compact ultrasound system.

If you could choose an ultrasound system, would you opt for portability, ease-of-use or crystal-clear images? For healthcare professionals who want it all, the LOGIQ® *i* was designed for you.

This lightweight system easily travels wherever you need to scan. With LOGIQ *i* by your side, you can depend on its comprehensive capabilities to help enhance your diagnostic confidence and improve patient care.

- SRI-HD with organ-specific imaging for tissue specific contrast resolution.
- CrossXBeam™ imaging for improved border detection.
- B-Steer Plus for enhanced target-needle visualization.
- Raw data imaging for improved workflow.
- Wireless networking for convenience and enhanced workflow on portable procedures.

See how you and *i* – the LOGIQ *i* – make a perfect combination.



See what *i* can do for you.



You and *i* can go more places than ever.

LOGIQ *i* delivers uncompromised performance to successfully execute the imaging challenges you face everyday. Whether in the OR, the ER, the radiology department or at the point of care, LOGIQ *i* provides the right capability at the right time.

With the LOGIQ *i*, your efficiency will soar:

- Raw data to acquire and store raw ultrasound data for future manipulation and analyses.
- Wireless capabilities to remotely send DICOM images to your PACS or a GE ViewPoint workstation.
- Shared service cardiac imaging tools expand patient care.



Your general imaging solution

Comments

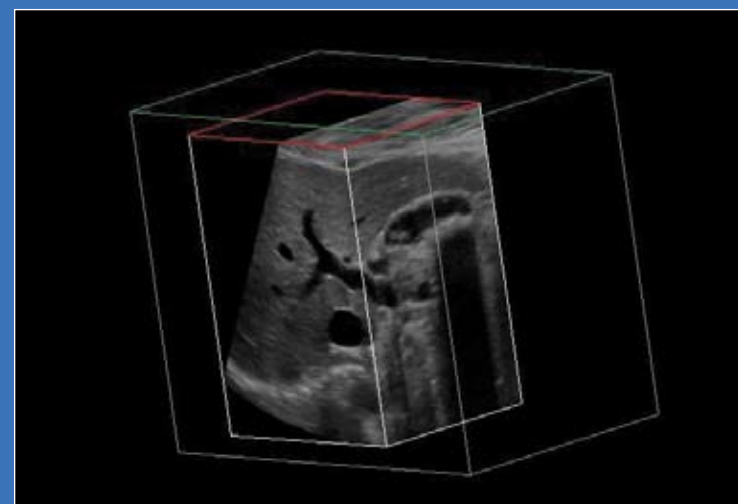
You can rely on LOGIQ *i* to help you complete your general imaging workload – including any backlog of outpatient exams and imaging needs in other departments.

Case

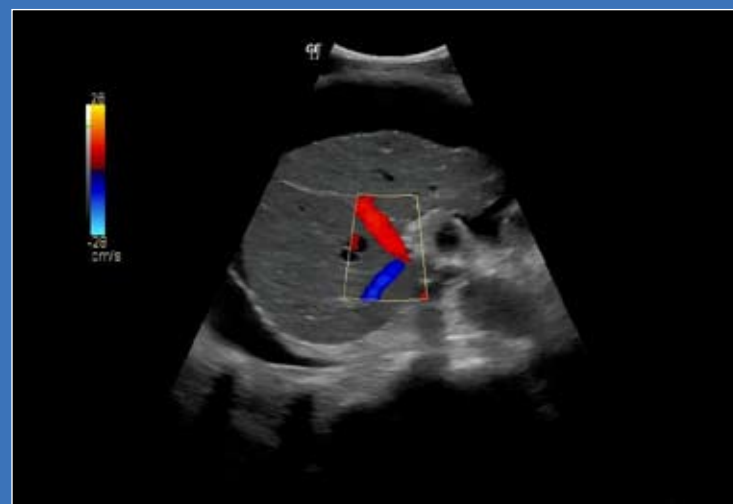
Radiology receives a call from the ICU where an unstable patient needs a post-operative ultrasound evaluation. The LOGIQ *i* is taken to the point-of-care, eliminating the need to move the patient from this closely monitored environment.

After the exam, the wireless transmission capability is used to quickly send the images to the radiologist for review. The patient remains stable and the nurse is able to stay in the ICU rather than escorting the patient to an imaging exam.

Taking LOGIQ *i* to the point-of-care eliminates the need to move a patient.



Easy3D technology demonstrating the spatial relationship between the portal vein and the gallstones using the 4C transducer.



Right portal vein demonstrating pleural effusion and ascites with the 4C transducer implementing coded harmonic imaging and SRI imaging.



Imaging with a 12L transducer through the anterior fontanel, CrossXBeam and SRI-HD imaging highlighting germinal matrix bleed.



LOGIQView enabling a view of the entire thyroid gland with the 12L transducer utilizing coded harmonic imaging and SRI-HD imaging.

You and *i* can see more than ever.

Designed to help you achieve detailed images of arteries, veins and surrounding tissue, the LOGIQ *i* performs difficult exams and gives you the freedom to choose the place for your studies.

LOGIQ *i* helps take your vascular studies to a new level:

- Full range of linear and curved transducers including the 9L, 8L, 12L and 4C.
- Complete vascular calculation package to customize and standardize your reporting templates.
- Raw data image capability for post acquisition optimization.
- Report Writer to develop custom reports.
- Vascular-focused interface with needed controls at your fingertips.



Your vascular imaging solution

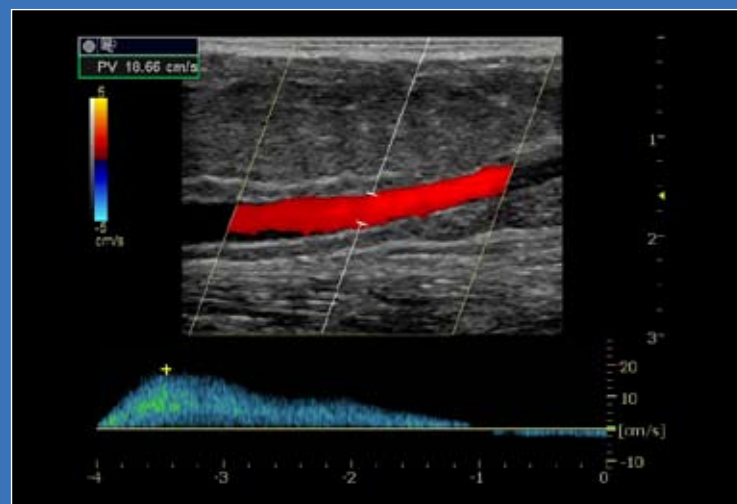
Comments

You need to be prepared for a variety of vascular imaging challenges from renal Doppler to all aspects of peripheral vascular disease (PAD). LOGIQ *i* also fills your need for both advanced image quality and robust reporting capabilities. From stenting procedures to seated patient venous insufficiency studies, advanced portability helps you efficiently complete the job.

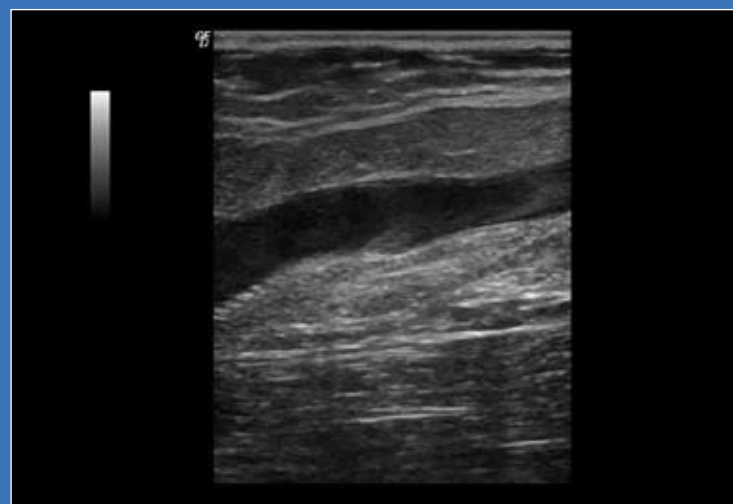
Case

A difficult and irritated patient is being scanned. The area of critical stenosis is finally achieved and a freeze is taken of an image, however the pulse Doppler is aliased. With conventional systems the choice is to either measure inadequately or re-acquire. Raw data on the LOGIQ *i* provides flexibility to: change the Doppler baseline, adjust angle correct and sweep speed, adjust B-mode and Doppler gain and to take color on and off after the image is frozen or recalled. LOGIQ *i* saved the department and the patient evaluation time with solutions to avoid re-acquiring an image.

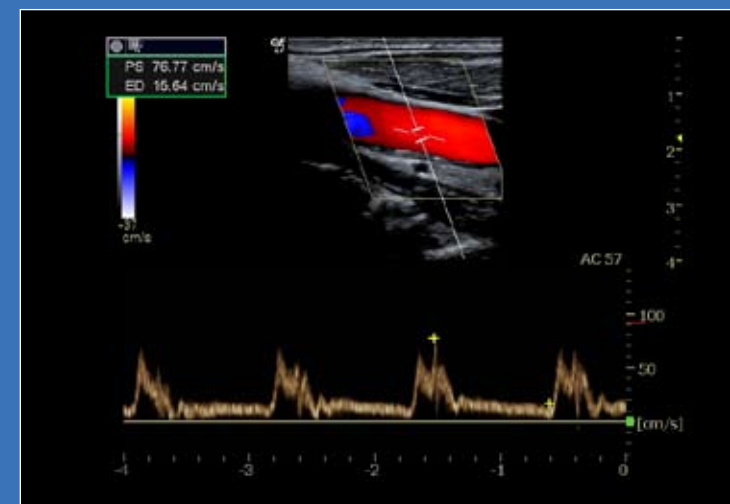
LOGIQ *i* can shorten exam times with solutions to avoid re-acquiring an image.



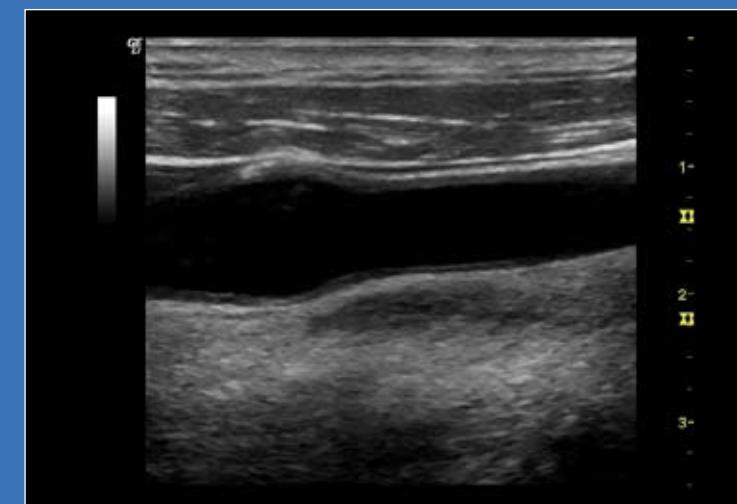
Triplex image with coded harmonic imaging utilizing the 12L transducer illustrating lower extremity venous insufficiency.



Coded harmonic imaging and CrossXBeam with SRI-HD visualizing new venous thrombus utilizing the 12L transducer.



Triplex image of normal carotid with the 8L transducer using SRI-HD enhancing contrast resolution and tissue boundaries.



Increased IMT thickness and hard plaque, enhanced by SRI-HD and CrossXBeam, at the bulb and proximal ICA with the 9L transducer.

You and *i* can make it easier.

To provide comprehensive and efficient breast care you must have confidence in your imaging capabilities. LOGIQ *i*'s advanced features help you acquire the detailed information you need for breast tissue assessment.

When performing breast ultrasound, you can depend on the LOGIQ *i* to provide:

- SRI-HD (High Definition Speckle Reduction Imaging) with organ specific imaging to heighten visibility through improved high-definition contrast resolution.
- CrossXBeam spatial compounding for improved anatomical margin definition and clarity.
- DualView, a simultaneous display of a 2D image alongside a color Doppler image, allowing for better delineation of tissue architecture while maintaining important clinical markers.
- Automatic Optimization (AO) to achieve peak and consistent image quality in both B-mode and spectral Doppler at the touch of a button.



Your breast imaging solution

Comments

The ultra-portable LOGIQ *i* enables breast care to occur where it is needed. Onboard advanced image optimization and analysis tools help you to better characterize lesions and masses and identify borders.

Interventional procedures typically happen in a small area requiring close positioning to the patient. The LOGIQ *i*'s small size and advanced tools help streamline biopsy procedures and improve precision for needle guidance. The optional footswitch provides further convenience and contributes to maintaining a sterile environment.

Case

A radiologist contacts the ultrasound department regarding a young woman who is at the facility for her first mammogram. A suspicious mass has been detected and the anxious patient and radiologist are eager for more information. LOGIQ *i* is taken to the mammography department and the woman is scanned within minutes of the call. This patient centric approach brings the care quickly to the patient – reducing work up time and patient anxiety.

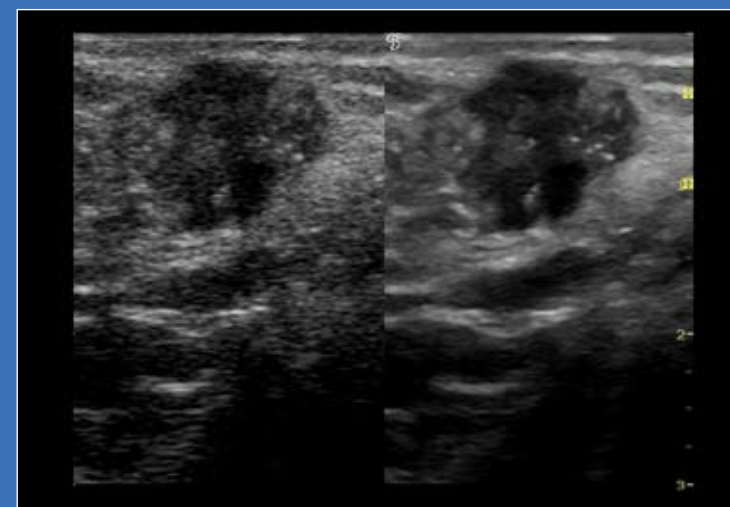
Ultra-portability of the LOGIQ *i* contributes to a patient friendly treatment environment.



Heterogeneous lesion with calcifications demonstrating variations in tissue planes using the 12L transducer with coded harmonic imaging, CrossXBeam and SRI-HD imaging.



Defined needle visualization for breast biopsy with the 12L transducer utilizing CrossXBeam, coded harmonic imaging and SRI-HD imaging.



Utilizing the 12L transducer, a DualView comparison showing a fundamental image on the left and CrossXBeam and SRI-HD enhanced imaging on the right to better define the margins of this complex breast mass.



Heterogeneous mass in the axilla demonstrates variations in tissue planes with the 12L transducer utilizing coded harmonic imaging, CrossXBeam and SRI-HD imaging.



You and *i* can have it all.

With the added benefits of shared service cardiac capabilities, advanced transducers and wireless transmission, you will be ready to face the diverse challenges of your workday.

- LOGIQ *i* provides the necessary tools to become an ICAVL and ICEAL accredited shared service imaging department including; the 2 MHz Pedoff probe for suprasternal notch imaging, continuous wave Doppler, ECG and more.
- Advanced transducers are ergonomically designed and lightweight to help you confidently and comfortably perform quality exams.
- Wireless capability provides the convenience of remote data transmissions improving workflow for you and your physicians.

Portability with power. For healthcare professionals who want it all, the LOGIQ *i* was designed for you.



You and *i* have the necessary support.

When you choose GE, you enter a long-term relationship that we value. Our commitment extends well beyond your purchase. We are here to help you make the most of your compact ultrasound system.

- 24/7 assistance by an in-house team of ultrasound service specialists, plus remote applications support from GE's OnLine Center.
- On-site applications training with GE applications experts.
- Access to clinical images from GE's LOGIQ Library.
- GE Continuum, our commitment to technology breakthroughs and a clear upgrade path.



©2008 General Electric Company — All rights reserved.

GE Medical Systems Ultrasound & Primary Care Diagnostics, LLC,
a General Electric company, doing business as GE Healthcare.

General Electric Company reserves the right to make changes
in specifications and features shown herein, or discontinue the
product described at any time without notice or obligation.
Contact your GE Representative for the most current information.

GE, GE Monogram, LOGIQ, CrossXBeam are trademarks of
General Electric Company.

Healthcare Re-imagined

GE is dedicated to helping you transform healthcare delivery by driving critical breakthroughs in biology and technology. Our expertise in medical imaging and information technologies, medical diagnostics, patient monitoring systems, drug discovery, and biopharmaceutical manufacturing technologies is enabling healthcare professionals around the world to discover new ways to predict, diagnose and treat disease earlier. We call this model of care “Early Health.” The goal: to help clinicians detect disease earlier, access more information and intervene earlier with more targeted treatments, so they can help their patients live their lives to the fullest. Re-think, Re-discover, Re-invent, Re-imagine.

GE Healthcare
9900 Innovation Drive
Wauwatosa, WI 53226
U.S.A.
www.gehealthcare.com



imagination at work